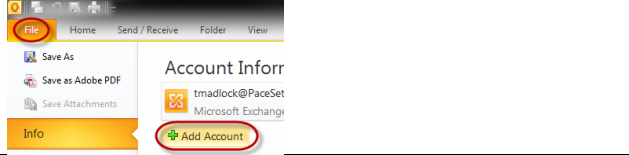
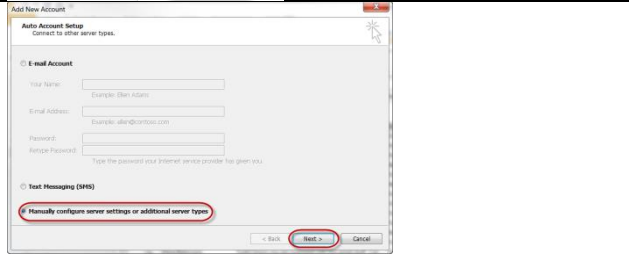
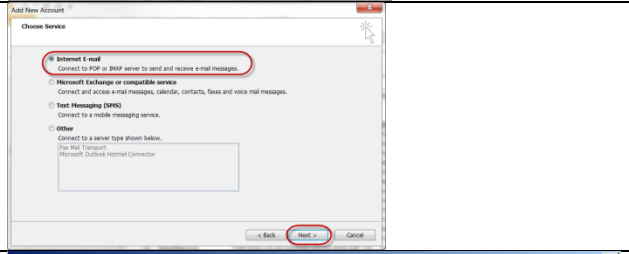
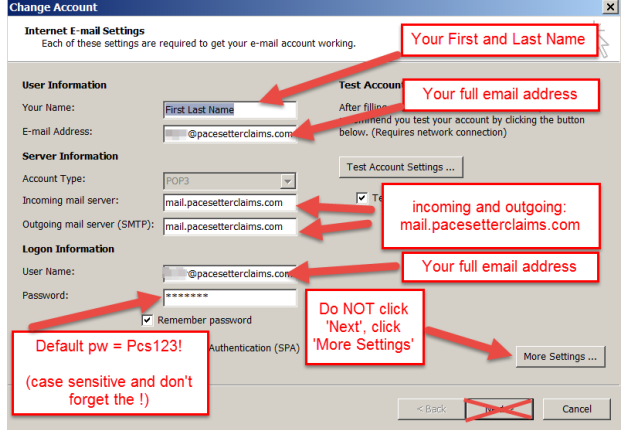
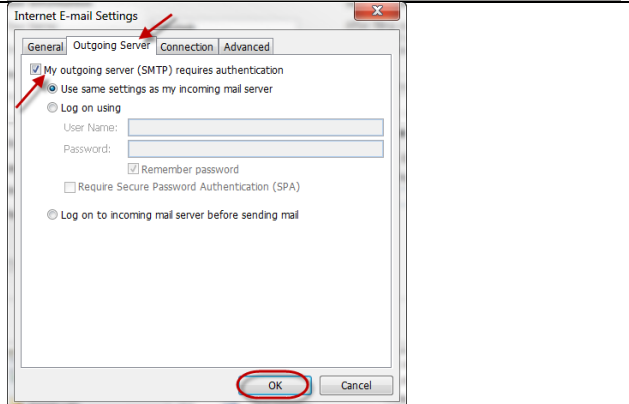
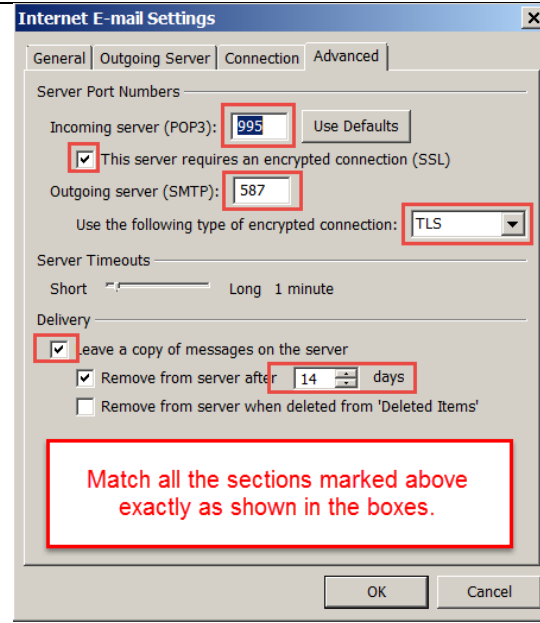


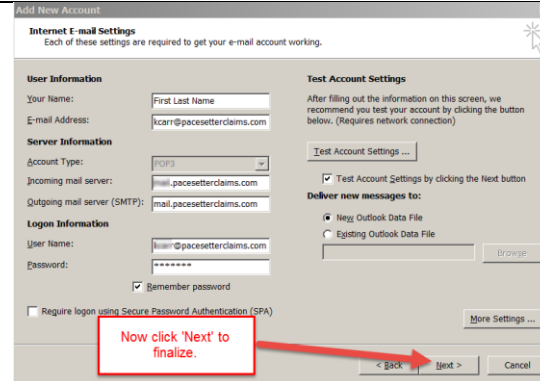
Pacesetter Adjuster POP Mail for Outlook

<p>1. Go to File → Add Account.</p>	
<p>2. Select “Manually configure server settings...” and click Next.</p>	
<p>3. Choose Internet Email, and click Next.</p>	
<p>4. Fill out this page as shown in the screenshot. → DO NOT CLICK NEXT at the bottom, click More Settings...</p>	
<p>5. On the Outgoing Server tab, check the first box and select the first radio button.</p>	

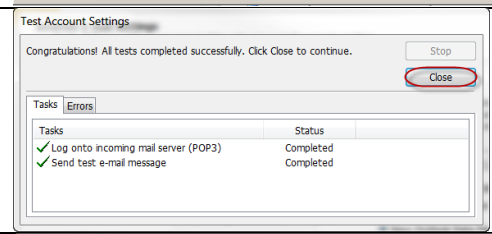
- Check the box for "This server requires an encrypted connection".
Enter 587 for the "Outgoing Server (SMTP)"
Check the "Leave a copy...." box, and the "Remove from server..." box.
Click OK.



- Now, click Next.



- Success! Click Close.



- Click Finish.

